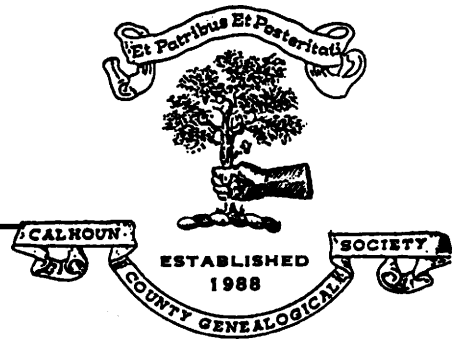


Generations

Volume 13, Number 5 ■ April/May 2001 ■ the newsletter of the Calhoun County (Michigan) Genealogical Society



CCGS meeting dates announced

by Carlene DeMaso, Vice President

We have some excellent speakers lined up for our coming meetings and I hope you'll join us.

At the **April 24** meeting Patrice Marquardt of the Marshall Framing Studio will tell the Society and guests about the handling and care of the precious paper and textile artifacts we collect while pursuing our family histories. She will relate the history of the materials used and their effects, as well as providing many visual aids. Patrice will even open a 100-year-old framing for the first time. She will talk about how components have changed through the years and what is available for preservation of our treasures.

Patrice has a background in art and is a certified framer highly qualified to frame those precious pictures and mementos, transforming ideas into artworks to be preserved for posterity.

The Marshall Framing Studio, 227 E. Michigan in Marshall, is stocked with materials and supplies with preservation in mind. Supplies include archival materials and ultraviolet-filtering glass. Photo restoration services are also offered. Please bring a friend and join us for the evening.

On **May 22** our own Ruth Kaiser will be back from the

sunny south with a wonderful program involving many of our society members. They'll tell us

NEXT CCGS MEETING: Preserving pictures and documents



April 24, 7 p.m.
B.E. Henry Building, Marshall

of their firsthand experiences in transcribing grave markers and putting together the information that goes into the cemetery books published by the society. Best of all, they will teach us how to do it so we can contribute some volunteer hours this summer to this most-appreciated project. *See p. 65 for a report about the cemetery volunteers' projects.*

Have you heard of the WPA? (Hint: Franklin Delano Roosevelt.) WPA (Works Progress Administration) records can help you in your research not only in Michigan, but throughout the USA. On **June 26** Carole Callard, a genealogy specialist from the Library of Michigan will tell us how, so don't miss this important source that may be new to you.

For more information call Carlene DeMaso at (616) 964-8570. ■

Family Origins software, scanning photos to be demonstrated at Computer Interest Group meeting

Willard Library and the Calhoun County Genealogical Society are collaborating on a family history/computer program Saturday, April 21. It will be held in the Willard Library Meeting Room from 1 p.m. to 2:30 p.m. Sandy Redmond, web master of the society's Internet site, will present the session. George Livingston, Willard Library family and local historian, will also be at the program to answer questions about materials available at the library.

The program will include a general discussion of computer-aided genealogy, a demonstration on scanning old family photos, and a demonstration of the popular software program Family Origins. A program such as Family Origins allows you to input birth, marriage and death dates, military service records, census records and other events in an ancestor's life. You can create family group sheets, ancestor charts and even books. Most important, it allows you to carefully document sources for the information gathered.

Doors open at 12:30 p.m.; seating is limited. Programs held at Willard Library are free and open to the public. ■

Volunteers needed

Pioneer Certificate Committee: A volunteer is needed to work on the society's All-Name Index to *Generations*. The index is a valuable tool for researchers with Calhoun County connections. If you know Microsoft Access software and have an eye for detail, please call committee chair Verla Potts, (616) 781-8594, to volunteer.

B.E. Henry Building Association: The society is a member of this association, which governs the building where CCGS meetings are usually held. We

need someone to represent our society at the meetings, the second Tuesday evening of each month.

Society Officers: It's time to begin thinking about who will lead our society during the coming membership year, which begins Sept. 1. We will have openings for a treasurer, recording secretary, corresponding secretary, publications chair and publicity chair. Please consider donating a few extra hours each month. Ballots will be printed in the June/July/August issue of *Generations* and will be due at the Sept. 25 meeting. ■



Calhoun County Genealogical Society

The purposes of the Calhoun County Genealogical Society (CCGS) are:

- to gather and preserve information of genealogical value.
- to encourage the deposit of such information in suitable depositories.
- to aid genealogists in the study of family history through the exchange of knowledge.
- to publish and promote Calhoun County and other genealogical materials.

The CCGS is a nonprofit, federally tax-exempt, state-chartered organization. Individuals, libraries or societies may apply for membership. Annual dues for the year beginning Sept. 1 are \$12. Memberships are accepted year-round; dues received after May 1 will pay membership for the following year. Members receive the newsletter *Generations* six times per year.

Meetings are held at 7 p.m. the fourth Tuesday of each month at the B.E. Henry Building, 615 S. Marshall St. in Marshall, unless otherwise specified. Programs are free and open to the public.

President

Joy Carter ■ (616) 963-4087 ■ cartermous@aol.com

Vice President

Carlene DeMaso ■ (616) 964-8570 ■ c.demaso@prodigy.net

Treasurer

John Baker ■ (616) 781-3045 ■ JDBkrGene@webtv.net

Recording Secretary

Brenda Cornish ■ (517) 629-4861 ■ bcornish@albion.edu

Corresponding Secretary

Ramona Short ■ (517) 629-2384 ■ rshort@triton.net

Membership Chair

Ilene Woodman ■ (616) 962-1667 ■ iwoodman@home.com

Program Chair

Carlene DeMaso ■ (616) 964-8570 ■ c.demaso@prodigy.net

Cemetery Project Chair

Ruth Kaiser ■ (517) 857-2747

Past President

Sandy Redmond ■ (616) 729-5258 ■ slredmond@earthlink.net

Archivist

Julia Miller ■ (517) 629-3852

Publications Chair

position available

Publicity Chair

position available

Pioneer Certificate Chair

Verla Potts ■ (616) 781-8594 ■ vpotts1548@aol.com

Newsletter Editors

Anita Stuever ■ (616) 789-9402 ■ AnitaStuever@voyager.net

Sue Stuever Battel ■ (616) 789-2848 ■ SueBattel@aol.com

All are invited to submit articles to the *Generations* newsletter editors, according to the editorial calendar.

Issue	Date	Articles due	Major theme
Vol. 13, No. 6	June/July/August 2001	June 1	Cemeteries
Vol. 13, No. 7	September/October 2001	Sept. 1	Human Migration
Vol. 13, No. 8	November/December 2001	Nov. 1	Old-Time Occupations
Vol. 14, No. 1	January/February 2002	Jan. 1	Beginning Genealogy

Permission is granted to reprint articles unless otherwise noted. Please give appropriate credit to the source.

CCGS ■ P.O. Box 879 ■ Marshall, MI 49068 ■ www.rootsweb.com/~micalhou/ccgs.htm

Films available at the Battle Creek Family History Center

The Family History Center of Battle Creek has hundreds of film titles available. With three microfilm viewers, six microfiche viewers, one viewer/printer and two computers, you can research to your heart's content. The center has complete Family Search Program CDs, The Mormon Immigration CD, the "new" Freedman's Bank CD, Parish and Vital Records List and the 1881 British Census of the Scottish Region. The Accelerated Indexing System Indexes to U.S. Censuses cover 1607 to 1906. Films indefinitely on loan are:

20531 History & Church Records 1735-1901, St. Gabriel's Church, PA

24527 Church, Cemetery, Bible & Family Records from Tenn.

24529 Church, Cemetery, Bible & Family Records from Tenn.

24790 Rhea Co., Tenn., Cemeteries

1303215 Birth Records, Chattanooga, Tenn. 1911-1915

851095 Tenn.-Genealogy Rhea Co., Admin & Wills 1841-1852

851097 Tenn.-Rhoane Co. Marriage Records 1801-1838

70969 Kirchenbuch 1843-1920

91090 Parish Register Transcripts 1582-1826. Church of England, Parish; Church of Chester-le-Street Baptisms, Burials 1582-1815; Marriages 1582-1826

169779 Virginia in 1740: A Reconstructed Census

493605 Census of Canada 1871 includes provinces of Ontario, Quebec, New Brunswick and Nova Scotia

1819276 Deaths-registration, 1869-1928 and index 1869-1928 Ontario

501952 New York, Allegany Co. Census Records 1855

501955 New York, Allegany Co. Census Records 1865 v. 3

1597653 State Census Records, Allegany Co., NY 1865

583830 Chautauqua Co., NY 1855 Census

583831 New York, Cattaraugus Census 1855

583831 Census of Cattaraugus Co., NY 1855

516008 New York, Cattaraugus Census 1855

517553 Census of Cattaraugus Co., NY 1855

835933 Kirkeboger, 1658-1951 - Kirkeboger 1741-1914

855039 Kirkeboger, 1642-1914 Den Danske Folkekirke, Vester Haesinge

874004 Auswanderungen, 1806-1895

874005 Kentucky Bible and Cemetery Records

874014 Cemetery Records, Cherokee Co., AL

874014 Cemetery Records, Cherokee Co., AL

876561 Cemetery Records of Windham Co., Conn.

900432 Genealogical Notes, Matheny Family of VA

900438 Ohio, Defiance Co., Deeds, v. 18-19, 1868-1871

900500 Ohio, Defiance Co., Deeds, v. 30-31, 1879-1881

1977639 Ohio, Defiance Co., Deeds, v. 12 1856-1864

874299 Ohio, Defiance Co., Marriage, Index 1845-1885

927685 100 years of Blessing 1867-1967 Trinity Lutheran Church, Reed City, MI

927690 1840 Census, Allegan Co., MI

1321839 1840 Census, Allegan Co., MI

984230 Burial Records, Allegan, MI

984231 Marriage Records, Ottawa Co., MI

984231 Marriage Record 1847-1902; Marriage Index 1847-1914, Ottawa Co., MI

984232 Birth Records 1867-1900; Birth Index 1866-1908

984235 Ottawa Co., MI

985687 Birth Records, Ottawa Co, MI., v. 5 1888-1893

985688 Gratiot Co., MI, Birth Index v. 1-3 1867-1974

985689 Gratiot Co., MI, Birth Records v. A-B 1857-1885

985690 Gratiot Co., MI, Birth Records v. C-D 1886-1908

985691 Gratiot Co., MI, Birth Records v. E 1908-1915

985692 Gratiot Co., MI, Death Records 1867-1935; Death Index v. 1 1867-1935; Death Records v. A 1867-1894

1005113 Gratiot Co., MI, Death Records v. B-C 1895-1935

1005116 Marriage Records 1859-1933/Marriage Index 1867-1952; Isabella Co., MI

1005117 Birth/Death Records 1867-1924/Index 1880-1940, Isabella Co., MI

1005117 Birth Records v. 1-3 1867-1897 Isabella Co., MI

1005118 Birth Records v. 4-5 1898-1918 Isabella Co., MI

1005119 Death Records v. 1-2 1867-1924 Isabella Co., MI

1008265 Death Records 1867-1910 Houghton Co., MI

1008266 Death Records 1867-1910 Houghton Co., MI

1008276 Calhoun Co., MI, Birth Index 1887-1923

1008277 Calhoun Co., MI, Birth Records v. 1-2 1867-1879

1008278 Calhoun Co., MI, Birth Records v. 3-4 1880-1894

1008279 Calhoun Co., MI, Birth Records v. 5 1894-1902

1008280 Calhoun Co., MI, Birth Records v. 6 1902-1908

1008281 Calhoun Co., MI, Birth Records v. 7-8 1909-1913

1009290 Calhoun Co., MI, Birth Records v. 9 1914-1921

1009291 Calhoun Co., MI, Death Index 1888-1933

1012861 Calhoun Co., MI, General Probate Index 1835-1976

1033762 John Tinker im frm Boston from England

1035536 Gen of Bishoos of Norton, Nova Scotia

1194720 Protestant Church Records Kirchenbuch 1781-1941; 1848-1880

1194721 Protestant Church Records Kirchenbuch 1816-1941; 1816-1852

1194733 Church Records Kirchenbuch Tote 1852-1866, Heiraten, Tote 1781-1815; Taufen 1894

1274098 FGR Archives Frey, Hans Jacob 1784

1320596 Baldwin Family 1686-1979

1394488 Mariana F. Scott, AF87-005727

1405194 Genealogy of Descendants of John Linton 1662-1708 & Rebecca Relf ca. 1600-1935

1469111 Long Benton, NBL Church Records Baptism 1845-1915; Parish Registers 1653-1926 Church of England, Parish Church of Long Benton

1518337 Registri Ecclesiastici, Battesimi 1838-1900; Matrimoni 1838-1848

1518339 Registri Ecclesiastici, Battesimi 1620-1674; Matrimoni 1638-1674; Morti 1633-1674; Battesimi 1675-1837, Matrimoni 1675-1837; Morti; 1675-1837 (Items 1-4)

1518382 Registri Ecclesiastici Morti 1800-1899; Battesimi 1667-1899; Matrimoni 1667-1899 (Items 2-3)

1518383 Registri Ecclesiastici Battesimi 1588-1806 (Item 5); Battesimi; 1689-1899; Matrimoni 1588-1899; Morti 1797-1899 (Items 2-4)

1698058 Van Matre Ancestry

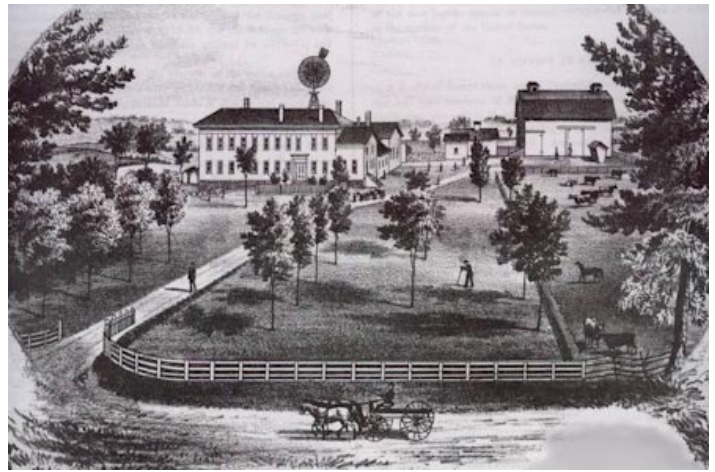
1872253 Indiana, Steuben Co. Wills v. 2 (from p. 220) 1882-1892; Wills v. 3; 1892-1905; Wills v.4 (to p. 441) 1905-1912

The County Almshouse

This history of the Calhoun County poor farm is reprinted from an early county history.

In the year 1849 (December 20) the board of supervisors bought of Thomas CHISHOLM the northwest one-quarter, section 9, township of Marengo, for two thousand dollars, for a county poor-farm, and abolished the distinction between county and township poor and made them all a county charge. The original building was erected in the year 1850–51, to which additions have been made from time to time until at present the building consists of a central part of one hundred and ten feet front and thirty feet deep, two stories; a wing to the north, the insane ward, twenty-four by forty feet basement and one story; and a similar wing to the north, twenty by thirty feet, two stories, which contains the lodging-rooms and the sitting-rooms of the inmates. The lower story of the central building has the office of the keeper and the general dining-room, the upper floor being occupied by the keeper and family. The buildings are of wood, and are heated by hot-air furnaces located in the basement of the insane wards. The buildings are thoroughly ventilated through the walls of the same, and the barns and out-buildings are capacious and convenient. The real estate is valued at eighteen thousand dollars.

The report of the county superintendents of the poor for the year ending September 30, 1876 shows receipts as follows: General appropriations for poor purposes made by supervisors \$15,000; products of farm sold, \$101.32; other receipts, \$76.65; total, \$15,177.97. They disbursed for all purposes connected with the charge of the poor in the county, \$17,014.09; and for the insane poor at the State institution, \$3338.74; for which an appropriation was made of \$3500, and an amount of \$484.59 was received from friends of insane persons cared for; making a total of expenditure for sweet charity's sake of \$20,352.83, in the centennial year of the republic by the county of Calhoun, one of the soulless corporations of the country. Ten children were taken from the almshouse to the State school at Coldwater, twenty-five in all having been so disposed of since the establishment of the school. For this expenditure two thousand six hundred and five weeks of board were furnished



We present to our readers in connection herewith a view of the almshouse.

for the poor at the county house, and two hundred and fifty weeks for the keeper of the house and his family and hired help; besides a large amount of relief afforded outside of the farm in the towns. There were fifty poor persons in the house at the close of the fiscal year, and one hundred and four had been admitted during the year. Five deaths occurred during the year. The products of the farm for the year were four hundred and seventy-four bushels wheat, two hundred bushels oats, one thousand four hundred bushels corn (in the ear), three hundred and thirty-six bushels potatoes, fifteen bushels apples, fifty-five bushels garden vegetables, six hundred heads cabbage, twenty-four tons hay, corn fodder from eighteen acres, two tons of pork, and fifteen and one-half acres wheat on the ground. The farm was well stocked with live-stock and farming implements, and improvements, permanent and valuable, had been made during the year.

The county superintendents of the poor are elected by the board of supervisors, and hold their office for a term of three years. Owing to the non-transference of the old records from the preceding

The Poorhouse Story is a clearinghouse for information about 19th century American poorhouses at **www.poorhousetory.com**. Linda Crannell (a.k.a. The Poorhouse Lady) maintains the site. Some pages may help you gain a better understanding of poorhouses. You can also click on any state and read information about many county poorhouses. Submissions are welcome. The information on this page was submitted to the site by CCGS.

Recent Pioneer Certificate recipients

Awarding pioneer certificates is the society's way of honoring the early residents of Calhoun County and their descendants.

Persons who have proved that their ancestor settled before 1861 are designated Pioneers. Those designated Settlers have ancestors who lived in Calhoun County between 1861 and 1890. Descendants of settlers from 1891 to 1920 are considered Builders. Below are listed the latest honorees.



Recipient	Ancestor	Designation
Linda Alair	Thomas Fox, Sr.	Pioneer
Kenneth George Kaiser	David Lamont	Pioneer
Gordon K. Bean	John Grove Bean	Pioneer
Trisha Lynn Bean	John Grove Bean	Pioneer
Gladys Berteen	Rice Alexander	Settler
Alexander Keicher	Rice Alexander	Settler
Robert Frederic Keicher	Rice Alexander	Settler
Randall Frederic Keicher	Rice Alexander	Settler
June Julia Alexander Miller	Rice Alexander	Settler
Wanda Lynn Miller Wilson	Rice Alexander	Settler
Christopher James Wilson	Rice Alexander	Settler
Rachael Alexandra Wilson	Rice Alexander	Settler
Erin Elizabeth Wilson	Rice Alexander	Settler
Gloria Jean Wilson	Robert H. Willson	Pioneer
Arlene Berry	Truman Walker	Pioneer
Arlene Berry	Peter Weaver	Pioneer
John D. Byrne	John D. Byrne	Pioneer
Mary Anne Byrne Morales	John D. Byrne	Pioneer
Sandra Shirley Redmond	Sylvanus Reed	Pioneer ■

The County Almshouse

Continued

board of superintendents to the present incumbents, we are unable to give a complete list of the superintends and keepers of the house since the establishment of the farm, but, as far as we have been able to ascertain, the superintendents have been as follows:

William FARLEY, Moses HALL, and Thomas HOLMES were the incumbents when the farm was bought and the first house built; Seth LEWIS, J.M. PARSONS, Solon E. ROBINSON, 1859–67; Elias HEWITT, whose term expired 1865; George E. JOHNSON, 1865–68; Rev. J.P. AVERILL, 1857–60; E.H. JOHNSON, 1860–63; Benjamin CLARK, 1863–67; E.H. JOHNSON, 1866–77; Judge T.W. HALL, 1867–77; A.O. HYDE, 1868–77. The keepers have been as follows: S.H. BUNKER, whose connection expired 1862; Henry DRAKE, 1862–66; W.D. CHAPPELL, 1866–71; H.L. WHITE, 1871–77. ■

Library of Michigan microfilm rooms to be renovated

Before heading to Lansing, take note. Three Library of Michigan microfilm rooms will be closed, on a rotating basis, for the installation of microfilm cabinets. Following are the scheduled closings.

Microfilm Room	Dates Closed
Newspapers	April 4–May 5
Periodicals	May 7–12
Genealogy	May 13–25

Be aware, too, that I–496 is closed from Pine Street to US–127 until August 2001. Information about the “Fix 496” program is at www.fix496.com. The Library of Michigan is at www.libraryofmichigan.com. ■

Member Query

This member is looking for family ties. If you can help, please respond directly to the person making the query.

REESE, LAZARUS, DOWNES, RICKNER/RICHNER

RAMSEY family of Hillsdale County and Battle Creek
HAND family of Hillsdale County and Lorain County, Ohio
DEAN family of Battle Creek; Lucas County, Ohio; and New York
GILTNER family of West Eckford area

I have extensive information on the above families and am willing to share. *See Arnold's pedigree on page 67.*

Arnold Dean
126 SW 14th St.
Richmond, IN 47374 ■

Smithsonian exhibit tours Michigan

Yesterday's Tomorrows: Past Visions of the American Future

So, it's the 21st century already! Where are our George Jetson space crafts? And our personal robots? Will there ever be a real "Time Machine?" What did the future look like for our grandparents and parents? What does it hold for us? For our children?

These questions are considered in "Yesterday's Tomorrows: Past Visions of the American Future," a traveling exhibition that explores the history of the future — our expectations and beliefs about things to come. From ray guns to robots, nuclear-powered cars to the Atom-Bomb House and predictions and inventions that went awry, "Yesterday's Tomorrows" helps us understand the values and hopes Americans hold and have held about the years to come.

The exhibit is on a five-year tour, and is making its first stops in Michigan:

- **through April 29**, Flat River Historical Society, **Greenville**, e-mail grnlcc@pathwaynet.com
- **May 4–June 20**, Tecumseh Area Historical Society, **Tecumseh**, e-mail wrptahs@hotmail.com, tecumseh_tours.tripod.com
- **June 30–Aug. 26**, Ironwood Theatre, **Ironwood**, e-mail office@ironwoodtheatre.org
- **Sept. 5–Oct. 28**, Presque Isle County Historical Museum, **Rogers City**
- **Nov. 4–Jan. 1 2002**, Leelanau Historical Museum, **Leland**, e-mail quackenbush@leelanauhstory.org, web leelanauhstory.org

To learn more, visit the exhibit's web site at <http://mihumanities.h-net.msu.edu/yesterdays/national/>. Whether or not you plan to see the exhibit in person, the site offers some features sure to please genealogists. A section called "Fun Activities" includes the future quiz (sample at right) and even a page called "Time Capsules." You can get tips for creating a time capsule at a reunion, information about what materials to use and more.

"Yesterday's Tomorrows: Past Vision of the American Future" is co-curated by Joseph J. Corn, Stanford University and Brian Horrigan, Minnesota Historical Society. Originally produced at the National Museum of American History, the travelling exhibition was developed by the Smithsonian Institution Traveling Exhibition Service (SITES) with the National Museum of American History and the Federation of State Humanities Councils. ■

TEST YOUR KNOWLEDGE of the future

In 1899, who said, "Everything that can be invented has been invented"?

- (a) Charles H. Duell, Commissioner of the U.S. Patent Office
- (b) Thomas Edison, inventor
- (c) Albert Einstein, theoretical physicist
- (d) Robert Goddard, rocket scientist

We've all heard the expression, "the greatest thing since sliced bread." The first bread slicing machine was put into service in a bakery in Grand Rapids, Michigan, in the year the machine was invented.

What year was that?

- (a) 1898
- (b) 1908
- (c) 1918
- (d) 1928

In 1943, Thomas Watson, chairman of IBM, said, "I think there is a world market for maybe [fill in the number] computers."

- (a) 5
- (b) 500
- (c) 50,000
- (d) 5,000,000

Copyright 2000 Eric S. Rabkin, used with permission. Find the complete 20-question quiz at <http://mihumanities.h-net.msu.edu/yesterdays/national/> under "Fun Activities."

Answers: a, d, a.

Have you subscribed to the CCGS e-mail list?

We'll automatically send you meeting notices and other important information about the society. Send an e-mail message to calhouncountygs@onelist.com with the word "subscribe" in the subject line. It won't overload your mailbox — just a few messages a month. ■



Civil War veteran will not be forgotten

More than a century after his death, a Civil War veteran will be given an honorable burial, thanks to the Austin Blair Camp 7 of the Sons of Union Veterans of the Civil War. Pvt. Daniel W. PINE's grave was discovered in an isolated area of a tiny old cemetery that, after more than seven decades of nonuse, has reverted to a natural state of tangled trees and scrub undergrowth. Even the cemetery archives did not seem to know his grave existed.

Since the discovery two years ago, the Sons of Union Veterans



has spearheaded an effort to relocate Pvt. PINE's remains to an honored location. A volunteer was working on a program to locate and register the grave of every Civil War veteran in Jackson County when she found the grave. The group is recording names of all males born between 1800 and 1850, then cross-reference the list with various Civil War records. Since 1997 the group has registered all of the more than 100 cemeteries, checked every headstone and recorded the graves of more than 1,300 veterans in Jackson County.

Daniel PINE was 36 years old when he volunteered for military duty in Syracuse, N.Y. He served with the 122nd New York Infantry from 1862 through the remainder of the Civil War.

PINE's regiment took part in most major battles in the east

Looking for a **CIVIL WAR ANCESTOR?**

Are you looking for an ancestor who served in the U.S. Civil War? Try the Michigan adjutant general's *Records of Service of Volunteers*. These 48 volumes, known as the "brown books," are indexed and organized by regiment, and contain an alphabetical, biographical list of all Michigan soldiers and sailors. The Library of Michigan and other depositories have the books.

where he suffered two wounds. When his regiment was mustered out in 1865 he returned to New York and worked as a laborer on the Erie Canal. For reasons no longer known, he moved to Jackson about 1875, and worked there for about ten years.

By 1887, PINE could no longer work or care for himself and was admitted to the Michigan Soldiers' Home in Grand Rapids. Two years later he died. With no wife or family in Michigan and no money, he was given a pauper's burial.

PINE will be given a more accessible and dignified resting place at Hillcrest's Field of Valor, a modern burial site for war veterans. An antique, horse-drawn hearse and a faithful rendition of the Grand Army of the Republic burial service will be used. Pvt. Pine will be given a new Civil War-style headstone.

The burial service conducted in Civil War uniform will include a color guard, firing squad, honor guard and drummer. It will be conducted at 1:30 p.m. Saturday, May 12, at Hillcrest Memorial Park. The cemetery is at 1425 Elm Rd., Jackson, one-quarter mile south of I-94 at exit 141. The Sons of Union Veterans expect that period attire will be worn by many in attendance, as well as participants.

Pvt. PINE was buried 112

years ago; on April 6 his remains were exhumed. Only funeral home and cemetery personnel were present, but it was a moving and inspirational experience for all.

"We had no idea how much or what we would find," said Bill Lowe, graves registration officer for the Austin Blair Camp. The funeral director reported he found complete skeletal remains. No portion of the casket or clothing was found except some of the handles, three nails and a few buttons. All these items will be placed in a new casket, hand-made by re-enactors. A metal plate inscribed "At Rest" will be attached to the new casket as it was probably attached to the original casket.

Hillcrest Memorial Park and Jerry Watson of the Watson Funeral Chapel are joining the Sons of Union Veterans in its determination to ensure that soldiers like Pvt. Pine will not be forgotten. The groups welcome your support by attending the services, contributing to the tax-exempt organization or both.

For information about how you can support the project, contact Bill Lowe, (517) 750-9138, or C.F. Tallman, Treasurer, Austin Blair Camp 7 of SUVCW, 4600 Ackerson Lake Rd., Jackson, MI 49201. ■

Everyone is descended from Charlemagne

A mathematician's calculations

As I was researching my LEE ancestral line back into the Middle Ages, I was excited to find that I am apparently a direct descendant of Charlemagne, the first Holy Roman Emperor. As I dug deeper, I found at least three separate lines of descent from him to me, and I saw more and more genealogical sites on the Web that claimed similar descent. This started me thinking about how likely it is that I, or anyone for that matter, might be descended from a particular person that far back. As a mathematician (though not by any means a probabilist), I figured I ought to be able to come up with at least a rough estimate of the probability. My conclusion, which was surprising (to me at least), is that there is virtually no chance that anyone of European ancestry is not directly descended from Charlemagne.

Here's my reasoning. Charlemagne was approximately 40 generations back from the present day. Each person has 2 parents, $2^2 = 4$ grandparents, $2^3 = 8$ great-grandparents, ... and 240, or approximately 1,000,000,000,000 (one trillion), 40th-generation ancestors, which means half a trillion male ancestors. Of course, since the entire male popula-

tion of Europe at the time of Charlemagne was only about 15 million, these half trillion ancestors cannot all have been different men — obviously there has been a lot of cross-breeding, and many of our ancestral lines cross and re-cross, eventually ending up at the same person. Let's assume that each of my 40th-generation male ancestors is a randomly chosen man from eighth-century Europe (this is not really valid, but ...). Choosing any one such ancestor, say my father's father's ... father's father, the probability that particular person is Charlemagne is one in 15 million. Pretty small. To put it another way, the probability that any particular ancestor was not Charlemagne is $1 - 1/15,000,000$, or approximately 0.999999933.

... Of course, there are a few sources of errors in this analysis, so there are various corrections one could make that might yield a more accurate estimate. ... But I believe these effects cannot change the fact that the probability we're talking about is so tiny as to be zero for all practical purposes. ■

— Jack Lee, see the full article at www.oz.net/~lee/Genealogy/charlemagne.html

You know you're taking genealogy too seriously if ...

- > A magical genie appears and agrees to grant your one wish, and you ask that the 1890 census be restored.
- > Your fourth wife pauses long enough at your desk to hand you the final divorce papers and without looking up you calmly type DIV in the marriage status box of your genealogy program.
- > You subscribe to so many genealogy mailing lists that you are still responding to messages posted four years ago.
- > You consider your dead ancestors and their relatives friends. You have more dead friends than live ones.

- > You were instrumental in having "non-genealogical use of the genealogy room copy machine" classified as a federal hate crime.
- > Your house leans slightly toward the side where your genealogical records are stored.
- > You spend two months' salary to buy the latest scanner that allows reproduction of photo negatives and microfilm. You take it with your laptop computer to the library to duplicate a microfilm instead of using the machine there to make photocopies of the pages you want because that one is too slow and costly.
- > You scowl at anyone who sits in the chair in front of the microfilm reader by the extra electrical outlet.
- > You address everyone you meet now as "cousin."
- > You are the only person to show up at the cemetery research party with a shovel.

- > To put the "final touches" on your genealogical research, you've asked all of your closest relatives to provide DNA samples.
- > You decided to take a two-week break from genealogy, and the U.S. Postal Service laid off 1,500 employees.
- > Out of respect for your best friend's unquestioned reputation for honesty and integrity, you are willing to turn off that noisy surveillance camera while she reviews your 57 genealogical research notebooks in your home. The armed security guard, however, will remain.
- > You plod merrily along "refining" your recently published family history, blissfully unaware that the number of errata pages now far exceeds the number of pages in the original publication.
- > Your monthly research expenditures exceed all other items in your household budget. ■

Volunteers make great progress transcribing county cemeteries

by Ruth Kaiser, Cemetery Project Chair

As chair of the cemetery project, I again extend the thanks of the Calhoun County Genealogical Society to all those who have participated in our cemetery projects.

Several former volunteers have had to take a break this year — some of us now find the necessary “cemetery squat” more difficult. Fortunately, we added several new volunteers from the west side of the county. It has taken awhile to get everyone trained, but a lot has been accomplished.

Projects during the summer of 2000 included:

- **Carolyn Bush** and **Ilene Woodman** finished Hicks in Pennfield
- **Judy Mudge** and **Gloria Huff** helped recheck and proof the Fredonia Township cemeteries and the township records
- **Joyce Laird** and **Bessie Ivey** completed Sandstone in Emmett Township
- **Judy Groat** and **Debby Wilson** completed Ceresco in

Emmett Township and Hotchkiss in Marshall Township

- **Virginia Hart** with **Lynn Ashley** completed Morgan Cemetery in Leroy Township
- My granddaughter's young eyes and limber joints helped with rechecking the old tombstones of Marengo Township, so the book for that township has been completed

I especially commend Virginia Hart, who has been a willing and faithful volunteer longer than anybody else.

Judy Groat has volunteered to prepare the database for the Ceresco Cemetery from the records she and Debby Wilson prepared. This will allow me to do more rechecking and supervising — if she can manage to work with me!

Fredonia Township should be complete this spring. It will take quite awhile to recheck the Hicks Cemetery, but I would like to have that completed by fall.

May your family records continue to grow and may you come to know your ancestors better. ■

Genealogy *gems*

Willard Library obtains new family history CD-ROMs

The Local and Family History Room of Willard Library has acquired six new genealogy CD-ROMs, listing nearly *five million* searchable names. You now have five million more chances of tracking down your ancestors who may be just a click away!

The immigration indexes include *Germans to America* from 1850 to 1888, which accesses 3.5 million names. Also available are 300,000 names from *Irish to America*, 1803 to 1871.

The marriage record CDs contain 161,000 individuals from Michigan and Wisconsin, 1830 to 1900; 303,000 records from Ohio, 1789 to 1850; and 292,000 individuals from Indiana, 1851 to 1900.

These programs have been installed on the Family Search computer located in the Local and Family History Room on the lower level of Willard Library.

According to local and family history librarian, George Livingston, “There is an ever-increasing variety of genealogical information available on CD-ROM. Librarians would be happy to point out these easily searchable and essential databases.”

Willard Library is located in downtown Battle Creek. ■

Latest Willard Library book acquisitions

The Student's Pocket Medical Lexicon by Elias Longley; Reprint 2000 by Heritage Books, Bowie, MD.

Black Roots: A Beginners Guide to Tracing the African American Family Tree by Tony Burroughs; 2001 Fireside Books, NY, NY.

Early Narratives of the Northwest: 1634-1699; Louise Phelps Kellogg, Reprint 2001, Heritage Books.

Retrieving Michigan's Buried Past: The Archaeology of the Great Lakes State, John R.

Halsey, 1999, Cranbrook Institute of Science, Bloomfield Hills, MI.

If Only the Walls Could Talk: The Architectural Heritage of Cooper, MI, W. Ward Christlieb, Priscilla Press, Allegan Forest, MI, 2000.

My Kind of Town: Coldwater, Branch Co., Charlie Tucker, Remnant Publications, 2000.

John Vert and His Descendants, Celina Sweet-Vert-Salvador, Heritage Books, 2000.

Soft Gold: A History of the Fur Trade in the Great Lakes Region, Ted Reese, Heritage Books.

An Atlas of Northern Trails Westward from New England, Carrie Eldridge, CDM Printing, Huntington, WV, 2000.

Lithuanians Buried in Albion, MI, Frank Passic, 2001. ■

Calhoun County *publications*

Resources published by CCGS:

The 1877 History of Calhoun County, MI (reprinted). More than 350 pages, printed on acid-free, archival paper, and is hard-cover, library-quality bound, includes every-name index, \$55.

Cemeteries of Eckford Twp. Calhoun County, MI. 110 pages, more than 2,100 names, \$10.

Clarence Township Cemeteries in Calhoun Co., MI. Clarence Center, Dyer, Hunt, Krenerick and Nichols, 66 pages, more than 2,100 names, \$8.

Transcriptions of Cemeteries of Convis Twp., Calhoun Co., MI. 35 pages, more than 1,000 names, \$6.

Every-Name Index for Generations, the newsletter of the Calhoun County Genealogical Society. August 1988–June 1995, 48 pages, more than 2,800 names, \$5.

Marriage Records of Calhoun County, MI, 1836–1890. 248 pages, indexed, \$18.50.

Clarendon Twp. Cemeteries, Calhoun Co., MI. Bentley Corners (East Clarendon), West Clarendon, St. Joseph and Cooks Prairie, 188 pages, \$15.

Lee Township Cemeteries, Calhoun Co., MI. Lee Center, Partello and Rice Creek, 75 pages, \$8.

Tekonsha Township Cemeteries, Calhoun Co., MI. Riverside, Windfall and MacFadden, more than 3,600 names, 221 pages, \$18.50.

To order, please send a check payable to Calhoun County Genealogical Society, P.O. Box 879, Marshall, MI 49068. All prices include shipping. Michigan residents please add 6 percent sales tax. ■

Is your membership current?

If there's a special sticker near the mailing label on your newsletter indicating this is your last issue, please consider renewing your membership in the society. Annual dues are \$12. You may mail a check to:

Calhoun County Genealogical Society
P.O. Box 879
Marshall, MI 49068

Please also check to make sure your address is correct, as some newsletters have been returned recently by the post office. ■

— Ilene Woodman, *Membership Chair*

NARA fees increased

If you plan to order records from the National Archives and Records Administration, know that the agency has increased its reproduction fees.

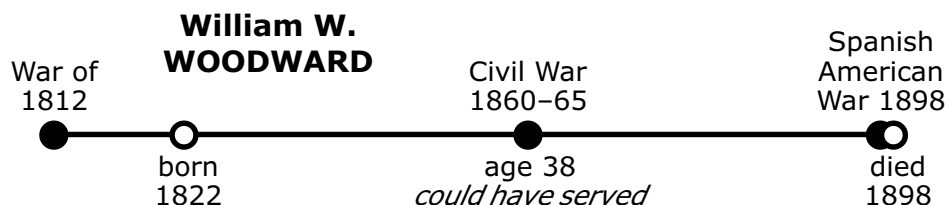
Type of record and order form	Price
Passenger arrival lists (NATF Form 81)	\$17.25
Federal Census requests (NATF Form 82)	\$17.50
Eastern Cherokee apps. to Court of Claims (NATF Form 83)	\$17.50
Land entry records (NATF 84)	\$17.75
Bounty land warrant application files (NATF Form 85)	\$17.25
Pension files >75 years old (NATF Form 85) — complete file	\$37.00
Pension documents packet (NATF Form 85)	\$14.75
Military service files >75 years old (NATF Form 86)	\$17.00

More information is available online at www.nara.gov/nara/cfr/cfr1258.html. ■

Top tips from our members

Timeline to determine service in a war

This issue's tip, from Shirley Hodges: If your ancestor served in a U.S. war, some excellent military records might be available. To determine if it's possible that any of your ancestors served, simply create a timeline. Across the top of a sheet of paper, plot out the years of the wars spanning your ancestors' lifetimes. Then add the birth and death dates. Finally, use the timeline to see if an ancestor might have been of an appropriate age to serve in each war. ■



Send your tip and name to Sue Stuever Battel at 21174 F Dr. S., Marshall, MI 49068 or SueBattel@aol.com.

A Member's Pedigree Chart: *Are you related?*

<p>4 James Leander DEAN B: 22 Nov 1864 P: Sylvania Twnshp., Lucas Co., OH M: 1891 P: OH or over the line in Michigan D: 2 May 1930 P: Sylvania, OH</p>	<p>8 Leander Hanford DEAN B: Dec 1831 P: NY—probably around Albany M: 1858 or 1859 P: probably Lucas Co., OH D: 7 Aug 1877 P: possibly in Hillsdale Co., MI</p>	<p>16 James Madison DEAN B: May 1801 D: 3 Dec 1864</p>
<p>2 Alison Leroy DEAN B: 23 Mar 1899 P: Sylvania, OH M: 21 Jul 1926 P: Battle Creek, MI D: 6 Jan 1989 P: Salisbury, NC</p>	<p>9 Lydia VAN ALSTINE B: 1840 P: OH D: 25 Nov 1890 P: Sylvania, OH</p>	<p>17 Elizabeth BROWN ? B: 1809 or 1810 D: 13 Nov 1889</p>
<p>5 Sarah Matilda GAHRING B: 17 Feb 1869 P: Lucas Co., OH D: 1905 P: probably Sylvania, OH</p>	<p>10 John GAHRING B: 23 Feb 1846 P: Buffalo, NY M: 2 Jan 1867 P: Toledo, OH D: 10 Jan 1927 P: Sylvania Twnshp., Lucas Co., OH</p>	<p>18 Jacob VAN ALSTINE B: 1802 D: 1860's</p>
<p>1 Arnold Leroy DEAN B: 23 Aug 1935 P: Battle Creek, MI M: 4 Jul 1956 P: Laurel, IN D: Living — <i>RICHMOND, IN</i> P:</p>	<p>11 Ellen CARROLL B: 1846 P: OH D: 25 Nov 1890 P: Sylvania, OH</p>	<p>19 Rhoda ? B: 1811 D: 1850's</p>
<p>6 James A. RAMSEY B: 1 Nov 1863 P: Hillsdale Co., MI M: 1882 P: ? ? D: 24 Mar 1933 P: Battle Creek, MI</p>	<p>12 James S. RAMSEY B: 1830 P: NJ or Muskingum Co., OH M: 17 Sep 1853 P: Brighton, Lorain Co., OH D: 13 Dec 1870 P: Hamilton (Lake), IN</p>	<p>21 Philopina ? ? B: D: aft 1870</p>
<p>3 Beatrice Nellie RAMSEY B: 21 Jun 1901 P: Lake City, MI D: 13 Mar 1968 P: Battle Creek, MI</p>	<p>13 Sarah HAND B: 1828 P: Cape May, NJ D: 1904 P: Hillsdale Co., MI</p>	<p>22 ? ? CARROLL B: D:</p>
<p>7 Laura A. REESE B: Jan 1862 P: Eckford Twnshp., Calhoun Co., MI D: 20 Jun 1936 P: Battle Creek, MI</p>	<p>14 John REESE B: 1831/32 P: PA M: 6 Oct 1859 P: Eckford Twnshp., Calhoun Co., MI D: 26 Oct 1876 P: Eckford Twnshp., Calhoun Co., MI</p>	<p>23 ? ? ? ? B: D:</p>
<p>Prepared 16 Dec 1992 by: Arnold L. Dean</p>	<p>15 Mary WILLIAMS B: Mar 1841 P: NY ? ? D: P: Marshall, Calhoun Co., MI</p>	<p>24 ? ? RAMSEY B: D:</p>
		<p>25 ? ? B: D:</p>
		<p>26 George HAND B: 1795 D:</p>
		<p>27 Rachael ? ? B: 1801 D:</p>
		<p>28 John REESE B: 1794 D: 1860's</p>
		<p>29 Mary GILTNER B: 1796 D: 25 Dec 1845</p>
		<p>30 James L. WILLIAMS B: D:</p>
		<p>31 Jane WILLIAMS B: D:</p>

Generations

Calhoun County Genealogical Society
P.O. Box 879
Marshall, MI 49068

Calhoun County Genealogical Society **CALENDAR**

CCGS monthly meetings are held the fourth Tuesday of each month but July, August and December and are free and open to the public. Meetings are held at 7 p.m. at the B.E. Henry Building, 615 S. Marshall St. in Marshall, unless otherwise specified.

- April 21 **Computer Interest Group meeting:** Family Origins software and scanning photos, Willard Library Meeting Room, Battle Creek, 1 p.m.–2:30 p.m.
- April 24 **CCGS monthly meeting:** Care and handling of visual artifacts presentation by Patrice Marquardt, 7 p.m.
- April 26 KCC Beginning genealogy course begins, New Horizon Center, Coldwater, (616) 965-3931, ext. 2642.
- April 28 Library of Michigan workshop: Ships' passenger lists, (517) 373-1300.
- April 28 Genealogical Society of Monroe County annual seminar, Monroe County Community College Administration Building.
- May 5 Eaton County Genealogical Society workshop, Holiday Inn Express, Okemos, (517) 543-8792 or ecgsoc@juno.com.
- May 12 Kalamazoo Valley Genealogical Society workshop: Helpful hints, a sharing program, Portage District Library, 2 p.m.
- May 12 Family history seminar: Lansing Family History Center, East Lansing, (517) 332-2932.
- June 9 Library of Michigan workshop: Family reunions, (517) 373-1300.
- June 26 **CCGS monthly meeting:** presentation by Carole Callard, 7 p.m.